

**Social  
Innovation ⊕  
Initiative**

# Info Session of the Call 'Innovative Approaches to Mitigate the Societal Consequences of Russia's War of Aggression against Ukraine within EU Countries

27 February 2024  
10:00 CET



Funded by  
the European Union

# Background of the call: societal challenges arising from the war of aggression against Ukraine

**Mathilde Prilleux**

DG EMPL, European Commission

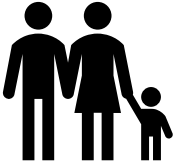


# Societal challenges arising from the war against Ukraine

Background of the call

*DG EMPL – Mathilde PRILLEUX 27.02.24*

# Multiple effects of the war



4.3 million people were still in European countries in February 2024

- People who fled face various situations of vulnerability since they arrived:
  - Only 45% of refugees are employed or self-employed.
  - 55% receive social protection or cash assistance.
  - For only 40% of them income is enough to cover all their basic needs.
  - 23% of households indicated having at least one family member with specific needs (disability, serious medical condition, etc.)
- A difficult context for the receiving societies
  - Recovery from the COVID period,
  - Energy consumption crisis with issues of rising prices of energy,
  - Purchasing power crisis, housing crisis,
  - Pressure on social services,
  - Multiple risks for EU societies' cohesion.

# EU Responses Framework

Temporary Protection Directive (until 4<sup>th</sup> March 2025)



Funding support for receiving MS

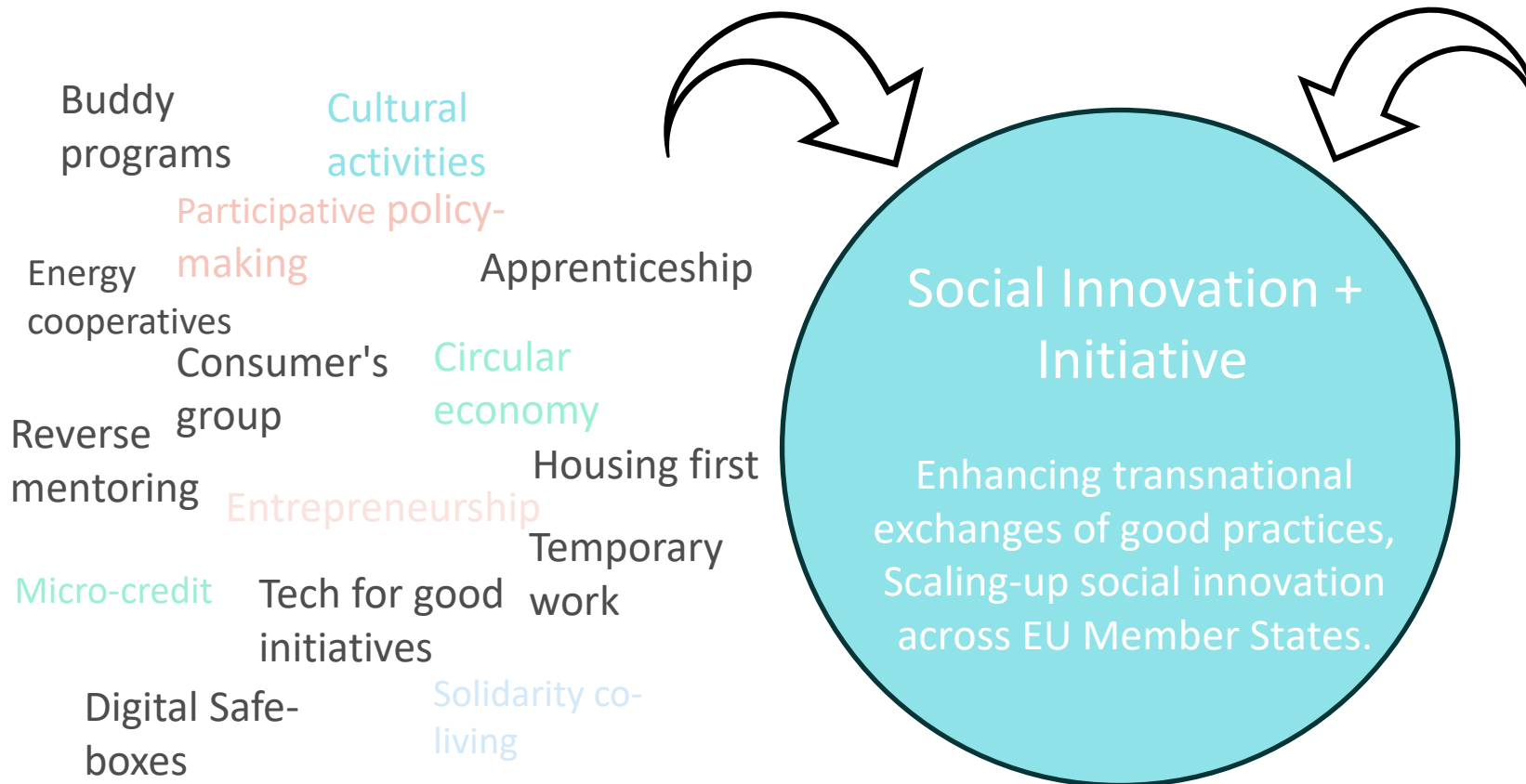
AMIF calls and initiatives (e.g. Safe Homes)

CARE and Fast-CARE amendments

Continued funding available through the new ESF+

Programs to limit EU's energy dependency : REPower EU

# Making the most of past experiences...



- Uncertainty towards the future,
- Material difficulty,
- Demographic characteristics of the people staying within the EU,
- Need for a dual intend approach,
- Relations and expectations with/of the country of origin.

...and tailoring it to the present crisis.

# Social innovation to address societal challenges

John Healy

Genio

# Social innovation to address societal challenges

Dr. John Healy  
Genio

27/02/2024





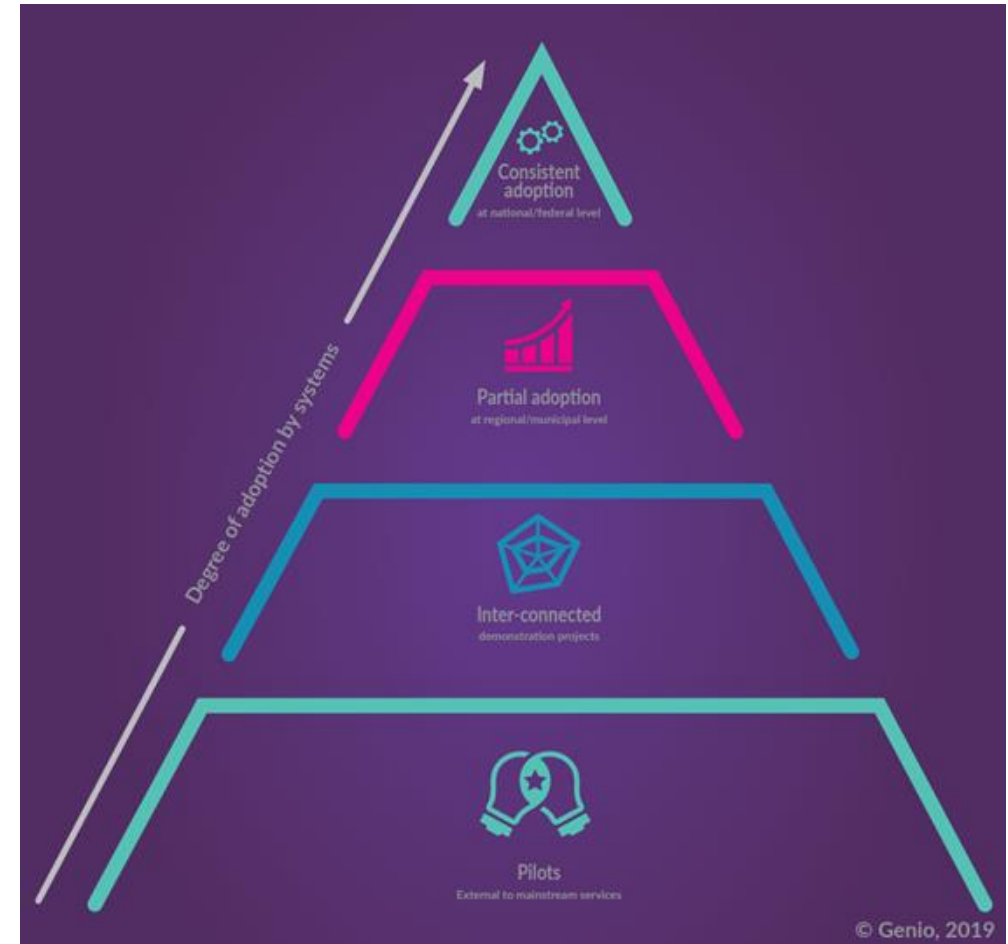
# What is social innovation?

Definition is broad but

- Targeted at a significant social challenge
- Innovative approach...that does not mean that it is “brand new” ...usually involves trying to change how some part of a system works
- Can be local, regional, national or international
- Often involves collaboration with communities and marginalised groups
- Involves a lot of adaptation as you scale

# What is scaling?

- Essentially spreading the impact of the social innovation
- Can be local, regional, national or international
- Usually this involves seeking to influence and /or get funding from large systems
- Involves close collaboration with champions inside systems
- Co-production/co-design with people using services



# Advice on the social innovation field

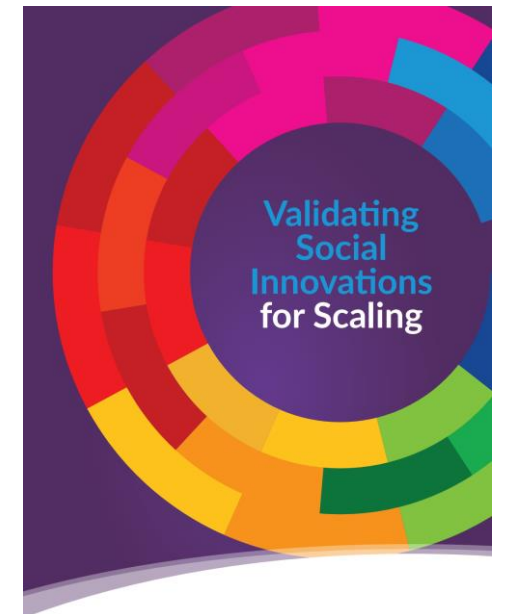
- Use the available SI infrastructure (e.g. National Competence Centres)
- Have a look at the guides...but don't be intimidated by the jargon
- Most importantly, look at how others have actually scaled innovative practices within complex systems close to what you want to do
- Focus on the complex systems you're working across



Anna Tengqvist, FFSS, Alexis Bouges, Avise, Malin Lindberg, LTU, Gloria-Karin López, FFSS



This publication has received financial support from the European Union.



# Some examples

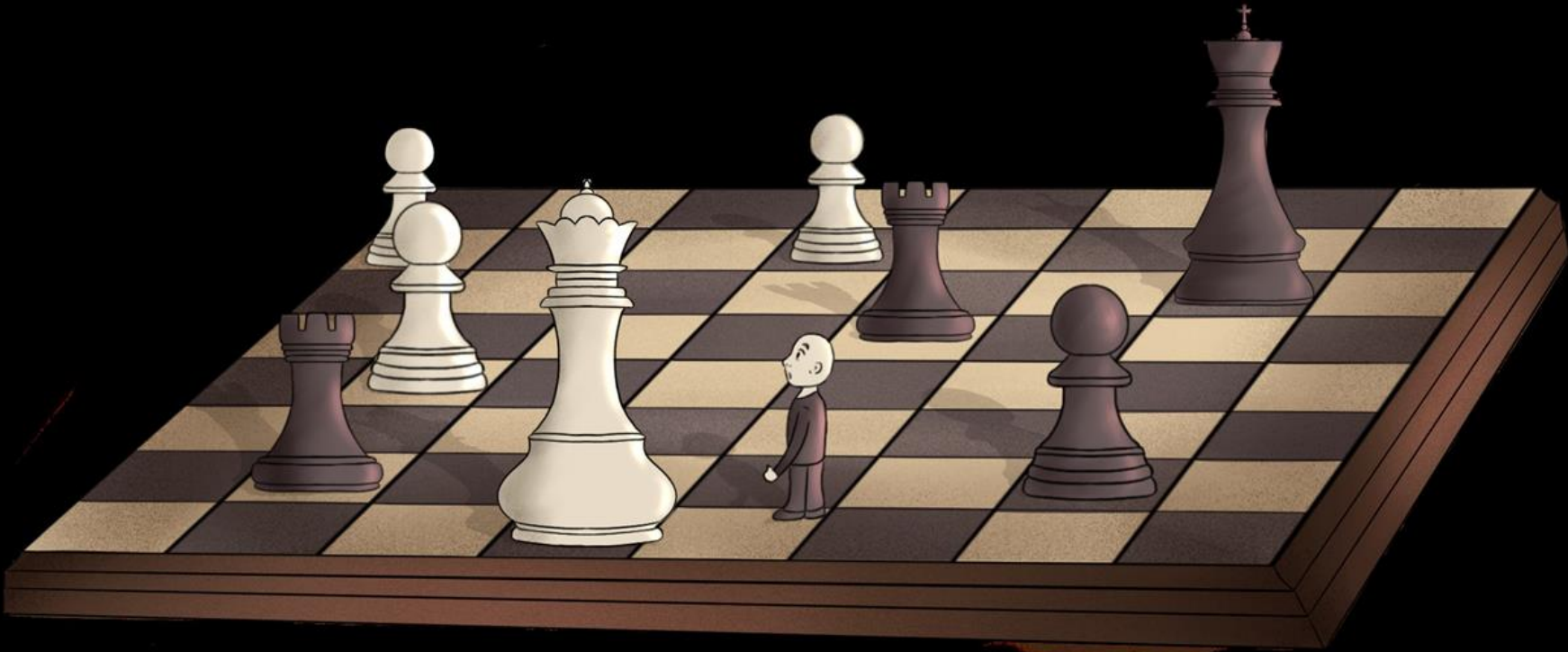
Housing First -  
Homelessness

Peer Support Models -  
Migrant Health

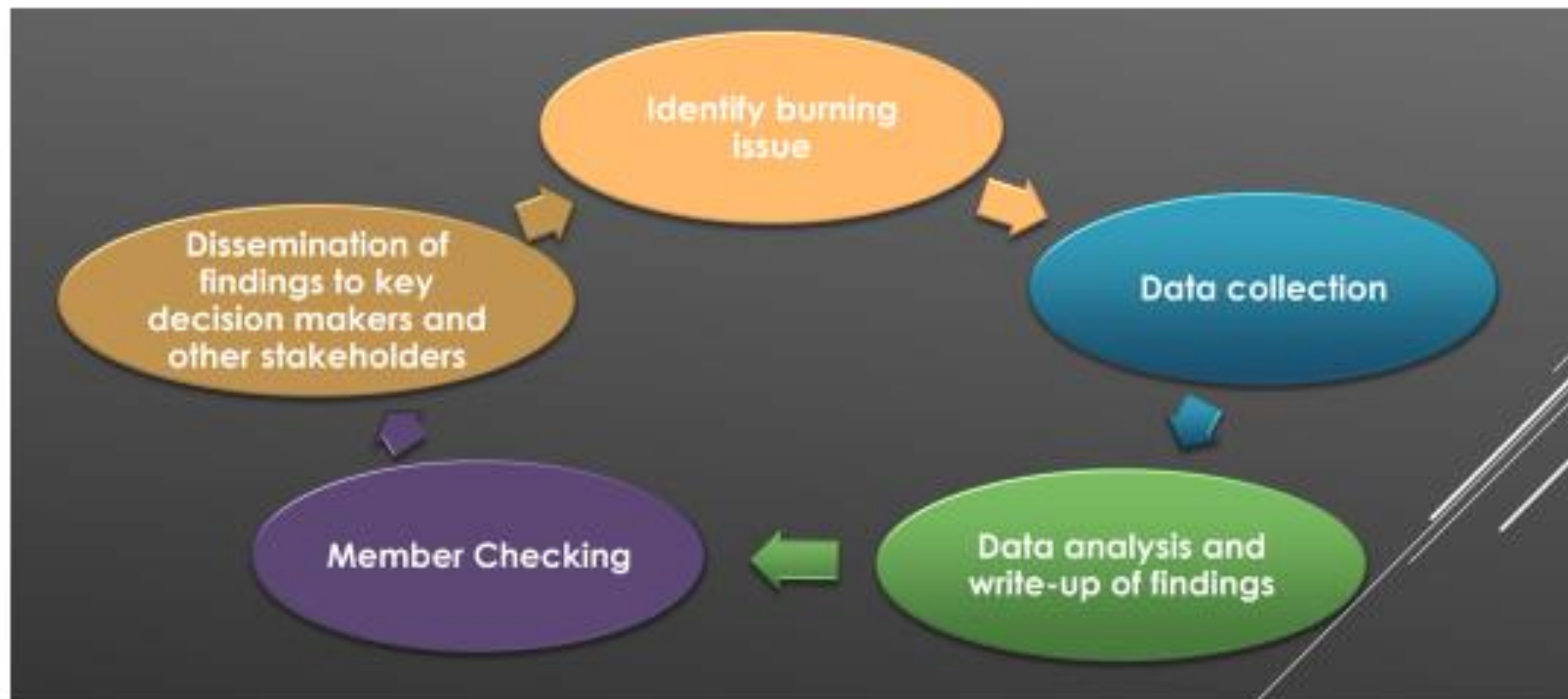


# Common themes

- These are not new...but they are highly innovative
- Scaling (i.e. working beyond local pilots) involves navigating complex system
- You have to understand the logics of these system & how people within these systems are likely to perceive the social innovation
- Use an approach that can help guide you through the complex, international systems that you need to navigate...locate and develop champions within these systems
- Listen carefully to the voices of the people using the innovation and adapt



# The process of action research



# Main aspects of the call

(key objectives, eligible participants, expected activities and outputs, project design)

**Rima Sermontytė-Baniulė**

European Competence Centre for Social Innovation



**Social  
Innovation (+)  
Initiative**

# Main aspects of the call

Project design, eligible beneficiaries, supported activities and outputs

**Rima Sermontytė-Baniulė**

**Project Coordinator | Transnational Calls Team**

European Competence Centre for Social Innovation

27 Feb 2024



Funded by  
the European Union

# Innovative Approaches to Mitigate the Societal Consequences of Russia's War of Aggression Against Ukraine within EU Countries

## The Call objectives

This Call will support transnational projects which aim at transferring or scaling up of social innovations. It will focus on two main objectives:

- Integration and social inclusion of refugees fleeing Ukraine;
- Mitigation of the consequences of the crisis on Member States' societies and their public services.

# Call information in short

- **Expected duration – from 12 to 18 months**
- **Estimated grant – from EUR 200 000 to EUR 700 000**
- **Call budget – EUR 22 000 000**
- **The form of grant: a lump sum grant**
- **Consortia – at least 2 legal entities from different EU Member States**

## Detailed information of the Call:

- [Innovative Approaches to Mitigate the Societal Consequences of Russia's War of Aggression against Ukraine within EU Countries | European social fund agency \(esf.lt\)](#)
- [ESF+ Social Innovation+ initiative](#)
- [Sources of Inspiration](#)



# Deadline and submission

## Deadline

30 MAY 2024 at 5 PM CEST time zone. All applications must be submitted directly online via the electronic portal and data exchange system eSINNIS ((e) Social Innovation Information System).

## Submission and support

1. Get access to [eSINNIS](#)
2. Connect to [eSINNIS](#)

For IT support: [IThelp@esf.lt](mailto:IThelp@esf.lt)

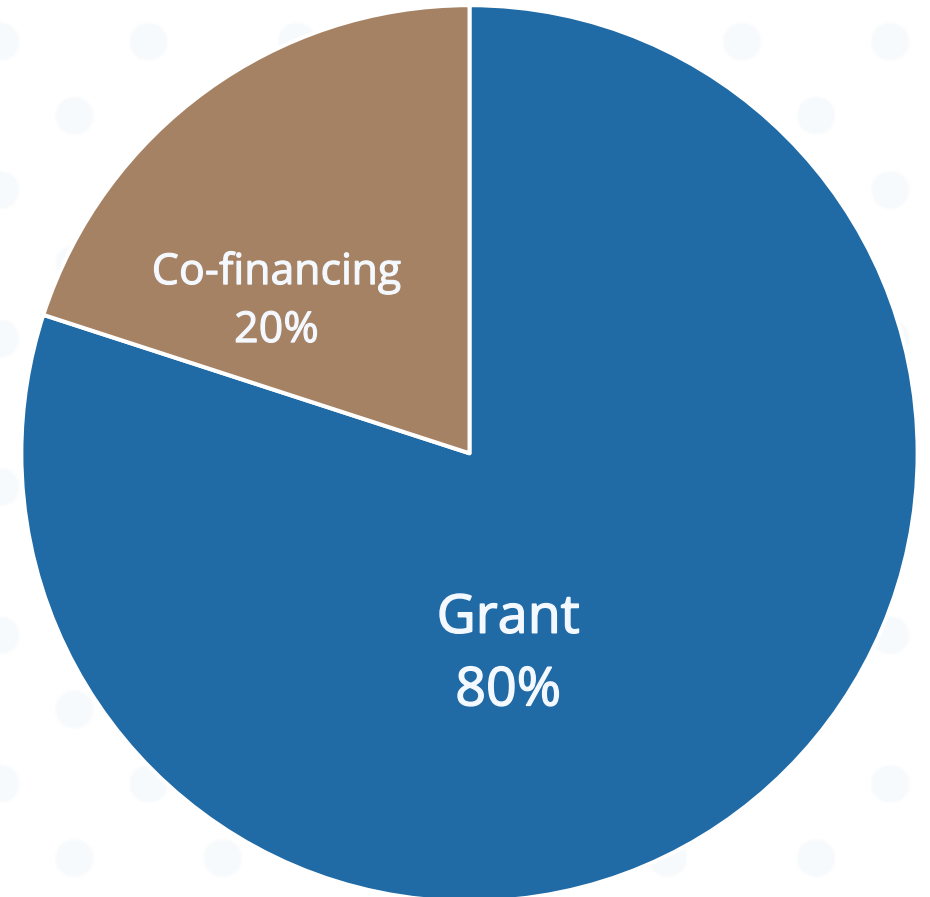
For the Call inquiries: [Ukraine@esf.lt](mailto:Ukraine@esf.lt)



# Estimated size of grant

Grant is estimated to be between 200 000 Eur and 700 000 Eur per project, constituting not more than 80% of the project's total budget.

This does not preclude the submission/selection of applications requesting other amounts, which means projects with smaller or larger budgets will be also evaluated.



# Co-financing

Co-financing of at least 20% may be contributed in different ways. It is possible that only one beneficiary contributes to the project. Also, co-financing may be distributed between all beneficiaries.

There is a strict prohibition of double funding from the EU budget. Any project may receive only ONE grant from the EU budget and under no circumstances shall the same costs be financed twice by the Union budget.



# Form of grant

The grant under this Call shall take the form of a lump sum grant. The amounts of lump sums will be established for the whole project (the total lump sum) and per each work package Individually.

For more details, please follow next presenter on Financial aspects of the call.





# Eligible participants

Legal entities established and registered in the EU Member States are eligible as applicants or co-applicants and associated partners:

**Non-governmental and non-for-profit entities**

**National, local, and regional authorities**

**Public entities**

**Research and education institutions**

**Private companies (including consultancy and service providers).**



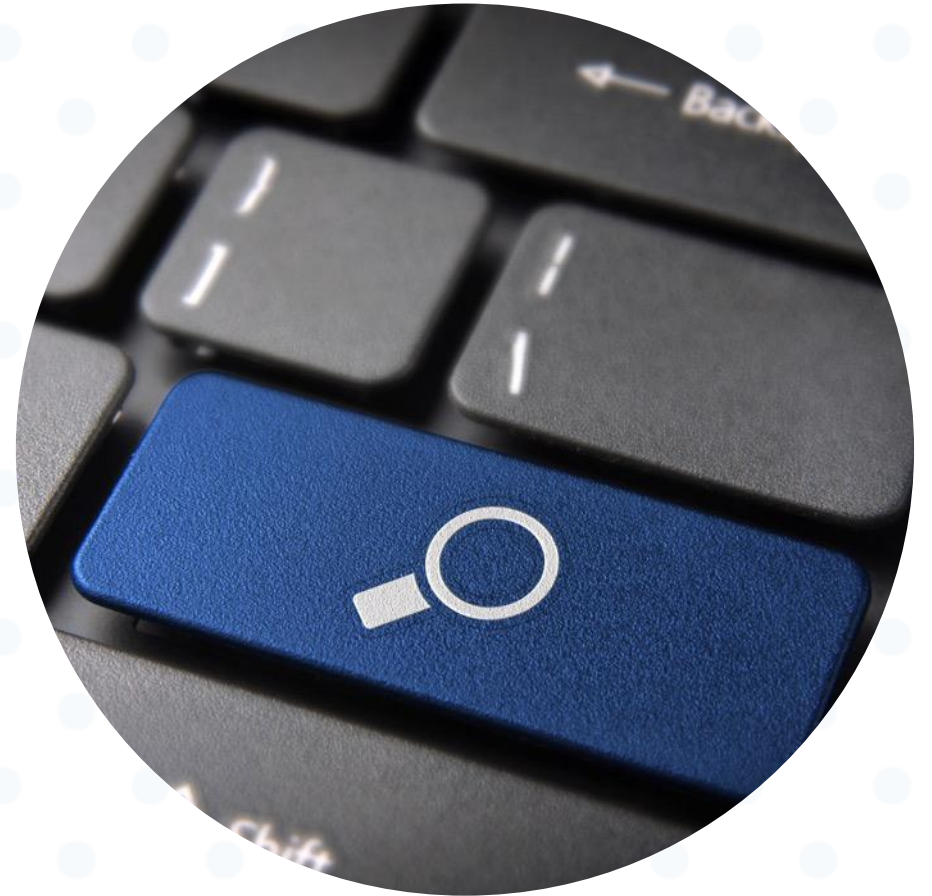
*Natural persons cannot be applicants, co-applicants or associated partners.  
International organisations and EU-wide networks can only participate in a project as associated partners.*



# Applicant's validation

- If applicant's or co-applicant's entity is already **validated** by the Central Validation Service (status 'validated') and has a Participant Identification Code (PIC), the entity's registration certificate does not have to be submitted.
- If the entity is not validated by the Central Validation Service, documents certifying the entity's legal status and origin shall be submitted as an annex to the application.
- You can check if your organisation has validated PIC [here](#)

STATUS		COUNTRY		CITY
SLEEPING	✘	LT		Kaunas
DECLARED	✘	LT		Kaunas
VALIDATED	✔	LT		KAUNAS



# Consortium set-up

## Only Consortia can apply

- The consortium must include an applicant (the coordinator) and at least one co-applicant
- The members of the consortium shall represent at least **two different EU Member States**.

## Involvement of associated partners

- An associated partner can participate in a project but may not declare eligible costs
- Will not be counted towards the required minimum number of consortium members
- Associated partners must be in line with requirements for consortia composition - they have to be also from EU Member States



*Under this Call, an entity may participate as the coordinator only in one consortium*

# Timeline

24 January 2024



30 May 2024



June– September 2024



December 2024

Call opening

Deadline for  
submission of  
applications

Assessment of  
applications

Signing Grant  
Agreements

# Introduction

## The refugee crisis

War of aggression against Ukraine has triggered one of the most significant humanitarian and displacement emergencies in Europe after the Second World War:

- Sparked mass influx of displaced persons fleeing Ukraine;
- Prompted immediate international response and aid efforts;
- Activated the Temporary Protection Directive and the 10-Point Plan;
- Mobilized efforts by neighboring countries and local authorities.



## Global impact of the war in Ukraine on European societies

The war in Ukraine, intensified by pre-existing economic and ecological challenges, has impacted European Union (EU) countries, extending beyond the refugee crisis:

- Escalated food and energy prices;
- Disrupted stable energy supply;
- Placed pressure on social services.





## The potential of social innovation

**Social innovation** - 'an activity, that is social both as to its ends and its means and in particular an activity which relates to the development and implementation of new ideas concerning products, services, practices and models, that simultaneously meets social needs and creates new social relationships or collaborations between public, civil society or private organisations, thereby benefiting society and boosting its capacity to act'  
(Article 2.1. (8) of the ESF+ Regulation).

**Social innovation is marked by the following characteristics:**

- It is based on tested small-scale solutions having potential for upscaling,
- It is construed on the bottom-up/ tailored approach,
- It requires active involvement of civil society.

# Benefiting from previously tested approaches in the subject fields of this Call

Applicants can draw inspiration from other previous EU initiatives, each offering unique perspectives on how to address the challenges of this Call:

- SIM platform
- Sources of inspiration ([here](#))

## REFUGEE INTEGRATION SOURCES OF INSPIRATION

### EMPLOYMENT



**COMPREHENSIVE APPROACHES**  
(removal of peripheral barriers, Fast Track, skills development)

[EUROPEAN YEAR OF SKILLS DATABASE](#)  
[ESF+ PROJECTS](#)  
[ERASMUS+](#)

**DIVERSITY AND INCLUSION**  
(implication of employers, mentoring)

[EUROPEAN YEAR OF SKILLS DATABASE](#)  
[ESF+ PROJECTS](#)  
[EU SOCIAL ECONOMY GATEWAY](#)



**ADAPTATION OF WORK**  
(entrepreneurship, temporary work solutions, integration through work)

[PES KNOWLEDGE CENTRE](#)  
[INTERREG PROJECTS - KEEP](#)  
[ESF+ PROJECTS](#)

### SOCIAL INCLUSION

**ACCESS TO SERVICES**  
(access to health, housing, material support)

[EUROPEAN YEAR OF SKILLS DATABASE](#)  
[INTERREG PROJECTS - KEEP](#)  
[URBAN INNOVATIVE ACTIONS](#)



**STRENGTHENING COMMUNITY LIFE**  
(clusters and networks of solidarity, community-based solutions, changing narratives on migration)

[INTERREG PROJECTS - KEEP](#)  
[PES KNOWLEDGE CENTRE](#)  
[EU EMPLOYERS TOGETHER FOR INTEGRATION](#)  
[URBAN INNOVATIVE ACTIONS](#)



## MITIGATION OF THE EFFECTS OF THE RECENT CRISIS SOURCES OF INSPIRATION

### TYPES OF ACTIONS



**ENHANCING SHARING ECONOMY**  
(support to energy and consumption communities, promotion of the circular economy)



**GENERATING TERRITORIAL EMPOWERMENT** (encouraging local production and short circuits, involving citizens in local decision-making concerning production and consumption)



**ADVANCING INCLUSION** (integrated interventions, single entry points)

### TYPES OF ACTORS



**SOCIAL ECONOMY ENTITIES**  
(namely cooperatives)



**APPLICATIONS AND "TECH FOR GOOD" RELATED ECOSYSTEMS**



**TERRITORIAL CLUSTERS, SMART VILLAGES**



**LOCAL AUTHORITIES, LOCAL ACTION GROUPS**  
(EU LEADER approach)

### RESOURCES

[EU SOCIAL ECONOMY GATEWAY](#)

[EUROPEAN SOCIAL INNOVATION COMPETITION](#)

[LOCAL ACTION GROUPS DATABASE](#)

[INTERREG PROJECTS - KEEP](#)

[NEW EUROPEAN BAUHAUS](#)

[EU PLATFORM ON SUSTAINABLE URBAN DEVELOPMENT](#)

[URBAN INNOVATIVE ACTIONS](#)

## Using social innovations to transform the refugee situation into opportunity

### a) Employment and skills



- An approach grounded in multi-stakeholder partnership;
- Multi-layered labour integration models/one-stop-shop approach;
- Recognition of the importance of socio-cultural environment for the adaptation to the local environment;
- Elimination of exclusion factors and catering for specific needs, including consideration of the socio-cultural background of a target group;
- Reinforcement of self-employment;
- Provision of customised employment counselling and mentoring.



# Using social innovations to transform the refugee situation into opportunity

## b) Social inclusion



### **Housing**

- Exploration of alternative housing approaches;
- 'Housing First' strategies.

### **Access to Social and Care Services**

- Administrative simplification;
- Review and adaptation of social service structures;
- Facilitation of access to healthcare.

### **Support Mechanisms**

- Facilitation of access to digital resources;
- Adjustable and adaptive support mechanisms.

### **Encouraging the commitment of the local population**

- Active involvement from refugees and local communities;
- Promotion of cultural and linguistic understanding.

## Using social innovations to mitigate the effects of the crisis

### **a) Tackling energy poverty**

- Encouraging advancement of community-based energy projects;
- Fostering energy communities.

### **b) Tackling the purchasing power crisis**

- Encouraging to reduce dependency on imported foods and enhance local food security;
- Promoting sharing economy models in communities;
- Creating digital platforms that connect small producers directly with consumers;
- Developing and promoting supply chain models that reduce wastage.

### **c) Experimenting more inclusive social services**

- The establishment of single-entry points for accessing a range of social services;
- The use of "easy language" in administrative documents;
- The creation of multi-disciplinary teams that offer a range of services from healthcare to psychological support, all under one roof.



Social  
Innovation ⊕  
Initiative

# Supported Activities and Outputs



Funded by  
the European Union





# Expected outputs

1

**Assessment of the existing evidence and building foundation of a new approach/model**

2

**Mapping, engaging and empowering stakeholders**

3

**Piloting and monitoring**

4

**Dissemination and continuity**

5

**Participation in mutual learning events**

# Essential elements of the application

Eligible applicants are expected to incorporate the following elements into their proposals:



Conceptual  
framework



Relevance of social  
innovation



Transnational  
partnership



Diversity of  
stakeholders



User-centred  
approach



Impact  
measurement and  
management



Dissemination



*For detailed description please refer to Section 2.3 of the Call Conditions.*

# Preparing the Application



*Horizontal WP (e. g. Coordination/Management, Dissemination and Communication, etc.) may be split in line with reporting periods*

Social  
Innovation ⊕  
Initiative

Thank You!

[Ukraine@esf.it](mailto:Ukraine@esf.it)



Funded by  
the European Union



# Social Innovation Match

**Reda Beržinskaitė**

European Competence Centre for Social Innovation

# What is Social Innovation Match (SIM)?

It is a new tool to promote the transfer and / or scaling up of social innovation across Europe.



# The database can help interested stakeholders:

- showcase social innovation examples;
- search for social innovation projects developed and tested in other countries;
- identify other organisations whose work is a source of inspiration;
- search for potential partners for European calls for transnational projects.

# How does the SIM work?

1

## Uploading a SIM case study

This can be done by any stakeholder (i.e., social innovation project promoter, managing authority, intermediate body etc.)

2

## Validation process

All the uploaded SIM case studies are validated before publication according to Validator's Checklist.

Validation is done by nominated validators.

This process takes approximately 15 working days.

3

## Validation result

If a case study meets all validation criteria from Validator's Checklist, it is being published and become visible.



# SIM statistics

## Social innovations

165

- 153 national / regional / local SIM case studies
- 12 EU SIM case studies

## Countries

25

### TOP countries:

- Belgium
- Germany
- Austria

## Thematic topics

16

### TOP topics:

- Social integration of those at risk
- Access to quality employment
- Active inclusion and employability



# Visit SIM



Log in English

## European Social Fund Plus

[Home](#) | [ESF+ in partnership](#) | [ESF+ direct \(EaSI\)](#) | [Projects](#) | [ESF Social Innovation+](#)

[Home](#) > [Social Innovation Match](#)

## Social Innovation Match

### SECTION ITEMS

[Social innovation and transnational cooperation](#)

[ESF Social Innovation+ initiative](#)

[Social Innovation Match](#)

[How to make ALMA work](#)

[Competence Centres for Social Innovation](#)

[Transnational cooperation platform](#)

### SIM MENU

- [Search case studies](#)
- [Search organisations](#)
- [SIM user guides](#)

**Social Innovation Initiative**

Let your successful social innovations work throughout the EU!

Funded by the European Union

Let your successful social innovations work throughout EU

## Case studies

### Country

### Type of initiative

### Thematic focus

### Level of action

### Status

### Source of funding

### EU fund

## Organisations

### FILTERS

### Country

### Level of action

### Theme of organisation

### Type of organisation

# Visit SIM

## CREATE A CASE STUDY

Share **your** initiative and its success;  
Upload an innovative project **by another initiator** whom you believe deserves recognition.

- Log in (create an account or log in using your EU Login);
- Click on the yellow box labeled "Create new Case study";
- Follow the further instructions and provide the requested information.

## Social Innovation Match

### SECTION ITEMS

Social innovation and transnational cooperation

ESF Social Innovation+ Initiative

Social Innovation Match

How to make ALMA work

Competence Centres for Social Innovation

Transnational cooperation platform

### SIM MENU

Search case studies

Search organisations

SIM user guides



**Social Innovation Initiative**

Let your successful social innovations work throughout the EU!

Funded by the European Union

Let your successful social innovations work throughout EU

## Latest case studies

SIM CASE STUDY  
**Kraftsamling för ökad ungdomssysselsättning**  
Gathering Forces for Increased Youth Employment

SIM CASE STUDY  
**KYKY 2015-2019**  
Promoting social inclusion of stay-at-home parents from Somali, Kurdish, and Arabic-speaking migrant communities in Helsinki

SIM CASE STUDY  
**Take the First Step**  
National adult literacy and numeracy awareness campaigns, 2016-2020

## Your SIM entities

Create new Case study

Create new Organisation

You still haven't created any SIM content. Use the buttons above to add Case study or Organisation.

Share this page

Twitter Facebook LinkedIn E-mail More share options

# Spreading the word equals Empowering the Change

Explore **SIM**,

Search for transnational **partners**,

Upload your **successful** social innovation **examples**,

Invite **organisations** whose work **deserves** recognition





# More information



## SIM weblink & QR

<https://ec.europa.eu/european-social-fund-plus/en/social-innovation-match>



## SIM publicity article

<https://www.esf.lt/en/news/social-innovation-match-database-a-new-possibility-of-visibility-and-recognition-for-you-and-your-organization/1278>



## SIM movie

<https://ec.europa.eu/european-social-fund-plus/en/videos/introducing-social-innovation-match-sim-database>



## SIM contact point

[SIM@esf.lt](mailto:SIM@esf.lt)

# Financial aspects of the call

(lump sum funding, eligible costs, project payments)

**Beata Mažul**

European Competence Centre for Social Innovation

**Social  
Innovation ⊕  
Initiative**

# Financial Aspects of the Call

**Beata Mažul**

Project coordinator | Transnational Calls Team  
European Competence Centre for Social Innovation

27 February 2024



Funded by  
the European Union

# Topics to be covered:

- Grant form: lump sum funding
- Work package (WP) and its linkage to lump sums
- Eligible cost categories and general cost eligibility conditions
- Detailed Budget Table
- Mistakes to avoid



# Form of grant

Funding under this Call - a lump sum grant

**Lump sum** – a form of simplified cost option, which is an approximation of the beneficiaries' underlying actual costs.

When compared to reimbursement of actual costs, lump sum funding removes obligations on cost reporting, thus provides considerable simplification.



*No obligation to justify incurred actual costs!*

# Why lump sum funding?

- Simplifies complex rules for actual costs and helps to prevent financial errors
- Reduces administrative burden and administrative costs
- Streamlines calculation of grant amounts and accelerates payment procedure
- Allows to focus more on technical performance, quality monitoring, dissemination and exploitation of project results



# Establishment of lump sums

Lump sums will be established case-by-case during assessment of the application.

Lump sums will be established on the basis of:

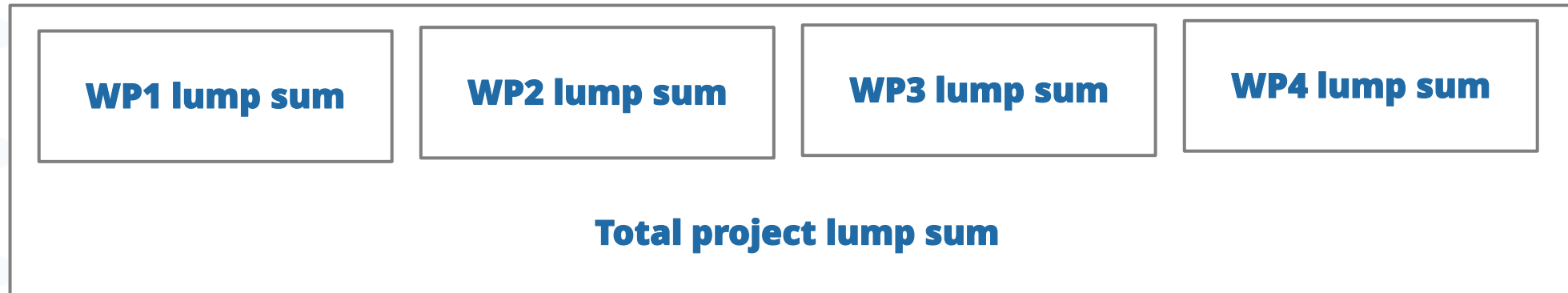
- Detailed Budget Table (submitted by an applicant)
- assessment of the validity of the requested amounts (by the Granting Authority)
- the funding rate of 80%

*Lump sums will be established in accordance with [the Rules of the Use of Lump Sum Contributions under the ESF+ SI+ Initiative](#)*

# Establishment of lump sums

Lump sums will be established:

- per each work package individually
- for the whole project



*Total project lump sum will be fixed in the Grant Agreement (GA).  
The breakdown of lump sum per beneficiary and WP will be specified in the GA.*

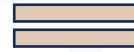


# Linkage between WPs and lump sums

The payment of a lump sum is linked to the completion of the corresponding WP.

A WP can only be declared as completed and the corresponding lump sum paid when all the work has been carried out, and all deliverables have been reached.

Work package  
completed



All work has been carried  
out and deliverables  
reached

Work package  
completed



Lump sum paid

# What does that mean in practice?

*Example: a WP includes an activity 'Study visits' and a deliverable '3 study visits completed'. If upon reporting only 2 study visits have taken place, the WP cannot be considered completed and the corresponding lump sum paid.*

- WP is only considered completed when all the work has been carried out, and all deliverables have been reached.

*! Payments for partially completed work packages are possible only at the end of the project, as part of the final payment.*

- Think through the structure of the WPs: set reasonable number of activities and deliverables within planned duration of WP.
- Consider splitting WPs with a longer duration (e.g., coordination/management WP) in line with reporting periods. In this case, relevant WPs can be completed and paid at the end of the reporting period.

*! That by no means shall lead to artificial splitting of WPs.*

# Detailed Budget Table (DBT)

- Detailed Budget Table – a mandatory annex (Annex 1 to the Call Conditions)
- **Detailed Budget Table = estimated costs per WP and per each beneficiary**
- Detailed Budget Table is filled beneficiary by beneficiary, for all WPs concerned.

[How to fill the Detailed Budget Table](#) – online tutorial



*The costs must be calculated in euros!*

# Filling in Detailed Budget Table

LIST OF BENEFICIARIES AND AFFILIATED ENTITIES			
<i>BE NR/AE</i>	<i>BE/AE name</i>	<i>Acronym</i>	<i>Country</i>
BE 001	Beneficiary1	BE1	PL
BE 002	Beneficiary2	BE2	LT
BE 003	Beneficiary 3	BE3	BE

LIST OF WORK PACKAGES	
<i>WP Nr</i>	<i>WP Label</i>
WP 001	Work package 1
WP 002	Work package 2
WP 003	Work package 3

! Shall correspond to the information in the application



General Information	Beneficiaries List	Work Packages List	BE 001	BE 002	BE 003	Estim costs of the project
---------------------	--------------------	--------------------	--------	--------	--------	----------------------------

# Filling in a Detailed budget table

- Complete only the number of units and cost per unit for each cost category
- The total costs will be calculated automatically

Beneficiary1	BE 001			BE 001
	UNITS	COST PER UNIT	BENEFICIARY TOTAL COSTS	BE+AE TOTAL COSTS
<b>Total WORK PACKAGES:</b>				-
<b>Coordination and management</b>				
<b>A. DIRECT PERSONNEL COSTS</b>				
<b>A.1 Employees (or equivalent) person months</b>				-
	Lead project manager			-
	Expert			-
	Researcher			-
	Project manager			-
	Consultant			-
<b>B. Purchase costs</b>				
<b>B.1 Travel and subsistence per travel or day</b>				-
	Travel			-
	Accommodation			-
	Subsistence			-
<b>B.2 Other goods, works and services</b>				-
	Consumables and supplies			-
	Services for Meetings, Seminars (rental of rooms, translations, interpretations, speakers' fees/trainers)			-
	Services for communication / promotion / dissemination			-
	Expert services			-
	Research, evaluation and studies			-
	Other			-
<b>TOTAL DIRECT COSTS (A+B)</b>				-

WP 001

# Eligible Cost Categories

Eligible cost categories under this Call:

A. Direct personnel costs:

A.1 Employees (or equivalent) person months

B. Purchase costs

B.1 Travel and subsistence per travel or day

B.2 Other goods, works and services

C. Indirect costs are calculated automatically by applying a flat rate of 7% to the eligible direct costs



# General Costs Eligibility Conditions

The cost estimations must approximate the actual costs.

In order to be eligible, the costs must be:

- in line with the applicant's usual cost accounting practices
- reasonable and not excessive
- be estimated in eligible cost categories
- comply with the applicable national and EU law
- necessary for the activities proposed
- related to the duration of the project.



*Estimate the costs using the same methodology as if these costs were declared under an actual cost-based grant agreement!*

# DBT: establishing units and costs per unit

Beneficiary1	BE 001			BE 001
	UNITS	COST PER UNIT	BENEFICIARY TOTAL COSTS	BE+AE TOTAL COSTS
<b>Total WORK PACKAGES:</b>				
<b>Coordination and management</b>				
<b>A. DIRECT PERSONNEL COSTS</b>				
<b>A.1 Employees (or equivalent) person months</b>				
			-	-
			-	-
			-	-
			-	-
			-	-
			-	-
			-	-
<b>B. Purchase costs</b>				
<b>B.1 Travel and subsistence per travel or day</b>				
			-	-
			-	-
			-	-
			-	-
<b>B.2 Other goods, works and services</b>				
			-	-
			-	-
			-	-
			-	-
			-	-
			-	-
			-	-
			-	-
			-	-
<b>TOTAL DIRECT COSTS (A+B)</b>				

WTP 001



# DBT: establishing units for personnel costs

- 1 Unit = 1 person per month (Effort)

1 unit person/month = 1-month full time for 1 Person

$$\text{Effort} = \frac{\text{Total days equivalent full time}}{17,92}$$

1 year = 215 productive days  
1 month = 215/12 = 17,92 days

*Example. In WP1, 2 researchers will work part-time, each 10 days per month, total 10 months:*

*Effort = 2x10x10/17,92=11,16 full time months*



*Indicate the effort of different positions separately!*

# DBT: establishing cost per unit for personnel cost

Cost per unit is the average monthly personnel cost of all employees in the same or similar position.

$$\text{Average monthly personnel cost} = \frac{\text{Actual personnel costs for a person for last 12 months of full-time work}}{12}$$

*Example. 2 researchers will work in WP1.  
For last 12 months of full-time work,  
actually incurred costs were:*

*Researcher 1 = EUR 46 000*

*Researcher 2 = EUR 50 000*

*Average monthly personnel cost:  
(46 000+50 000)/2/12 months= EUR 4000*

# DBT: calculating personnel costs

Beneficiary1		UNITS	COST PER UNIT	BENEFICIARY TOTAL COSTS	BE+AE TOTAL COSTS
<b>Total WORK PACKAGES:</b>		-		47 765	47 765
<b>Work package 1</b>					
<b>A. DIRECT PERSONNEL COSTS</b>				44 640	44 640
<b>A.1 Employees (or equivalent) person months</b>				44 640	44 640
	Lead project manager			-	-
	Expert			-	-
	Researcher	11,16	4 000	44 640	44 640
	Project manager			-	-
	Consultant			-	-
<b>B. Purchase costs</b>				-	-
<b>B.1 Travel and subsistence per travel or day</b>				-	-
	Travel			-	-
	Accommodation			-	-
	Subsistence			-	-
<b>B.2 Other goods, works and services</b>				-	-
	Consumables and supplies			-	-
	Services for Meetings, Seminars (rental of rooms, translations, interpretations, speakers' fees/trainers)			-	-
	Services for communication / promotion / dissemination			-	-
	Expert services			-	-
	Research, evaluation and studies			-	-
	Other			-	-
<b>TOTAL DIRECT COSTS (A+B)</b>				44 640	44 640
<b>C. Indirect costs 7% (rounded to zero decimals)</b>				3 125	3 125

WP 001

# DBT: Travel, accommodation and subsistence costs

- Costs for travel, accommodation and subsistence have to be calculated using unit costs fixed by the authorising [Decision C\(2021\)35](#).
- All unit costs cover a return trip. However, the calculation of the distance should be done on the basis of the 1-way distance between the points. For calculating the distance between two points use [distance calculators](#).
- When unit costs are available, their use is mandatory. If unit costs are not mentioned in the Decision C(2021)35, actual costs may be used.



*Travel information (i.e., number of travels, participants, destination countries, travel duration) shall be presented in the application, under the relevant WP!*

# DBT: Other Goods, Works and Services

- Project public procurement must comply with the applicable national law on public procurement.
- Purchases between beneficiaries are not accepted.
- To justify the purchase price applicants can freely choose between best value for money and lowest price.

*Example. To implement activities under WP 1, Expert 1 and Expert 2 services need to be purchased.*

- *Expert 1 services cost 10 000 Eur*
- *Expert 2 services cost 20 000 Eur*

*Cost per unit:  $(10\,000 + 20\,000)/2 = 15\,000$*

*Units of cost: 2*



If several services are purchased, the cost per unit = the average cost of all items;  
the number of units = the number of items.

# DBT: calculating other goods, works and services

Beneficiary2		BE2			BE 002
		UNITS	COST PER UNIT	BENEFICIARY TOTAL COSTS	BE+AE TOTAL COSTS
<b>Total WORK PACKAGES:</b>				32 100	32 100
WP 001	<b>Work package 1</b>				
	<b>A. DIRECT PERSONNEL COSTS</b>			-	-
	<b>A.1 Employees (or equivalent) person months</b>			-	-
	Lead project manager			-	-
	Expert			-	-
	Researcher			-	-
	Project manager			-	-
	Consultant			-	-
	<b>B. Purchase costs</b>			30 000	30 000
	<b>B.1 Travel and subsistence per travel or day</b>			-	-
	Travel			-	-
	Accommodation			-	-
	Subsistence			-	-
	<b>B.2 Other goods, works and services</b>			30 000	30 000
	Consumables and supplies			-	-
Services for Meetings, Seminars (rental of rooms, translations, interpretations, speakers' fees/trainers)			-	-	
Services for communication / promotion / dissemination			-	-	
Expert services	2,00	15 000	30 000	30 000	
Research, evaluation and studies			-	-	
Other			-	-	
<b>TOTAL DIRECT COSTS (A+B)</b>				30 000	30 000

# Project Payments

**For projects lasting  
up to 12-months**

First (initial) prefinancing  
of 70%  
after the signature of the GA



Final payment  
(payment of the balance)



**For projects lasting  
12 - 18 months**

First (initial) prefinancing  
of 50%  
after the signature of the GA



Second prefinancing  
of 30%  
after the approval of the first periodic report.



Final payment  
(payment of the balance)



# Second Prefinancing: for projects lasting 12-18 months

Where the expenditure of the first prefinancing is less than 70%, the amount of the second prefinancing payment will be reduced by the difference between the 70% ceiling and the amount used.

*Example. A project with 18 months' duration and EUR 500 000 grant is being implemented. A project promoter received the first pre-financing amounting to 50% of the total grant (EUR 250 000).*

*During the assessment of the periodic report, it was concluded that only 60% of the first prefinancing was used (EUR 150 000).*

*The amount of the second prefinancing will be reduced, by deducting unspent sum of the first prefinancing payment.*



*Think through the structure of your WP to ensure sufficient cash flow!*

# Mistakes: budget and eligible costs

- Make sure that the requested amounts are properly justified

Describe in detail the activities covered under each WP

*For example, provide detailed travel information in the activity description of a corresponding WP (number of travels and participants, destination countries, duration).*

*For example, if any costs are included under the category 'Other', specify the breakdown of the costs in the sheet 'Comments' (Detailed Budget Table).*

- Do not include costs incurred by associated partners into the project budget

*For example, travel expenses related to participation of associated partners in meetings are ineligible.*

*In case of external experts, travel expenses related to participation in meetings are eligible. We recommend including them into the service costs (under the category B.2 'Other goods, works and services').*

# Mistakes: budget and eligible costs

- Properly calculate the expenses of the management / coordination WP

Activities under coordination/management WP should be performed solely by the coordinator, thus only costs incurred by the coordinator can be claimed under this WP. *Other applicants should not seek direct costs reimbursement for activities related to the coordination/management WP. Management activities implemented by other beneficiaries could be covered from indirect costs.*

Project coordination/management activities are core activities and cannot be subcontracted.

- Include travel costs related to participation in mutual learning events

Participation in mutual learning events organised by the European Competence Centre for Social Innovation is mandatory (Section 2.2 of the Call Conditions). *Include these costs into the Detailed Budget Table as they will not be reimbursed separately.*

# Mistakes: budget and eligible costs

- Assess your project against the award criteria 'Quality'

Quality – project design, implementation, and team (max 40 points, threshold 20 points):

Project design and implementation (max 20, threshold 10 points)

The cost-effectiveness of the project (max 20, threshold 10 points)



Justify cost-effectiveness of the project!

# Mistakes: budget and eligible costs

- Read the instructions for completing the Detailed Budget Table carefully

Study information provided in the sheets „Instructions“ and “Cost Eligibility Conditions” (Detailed Budget Table).

- Make sure you have filled all the requested information in the Detailed Budget Table  
*(For example, both ‘units’ and ‘cost of units’)*
- Make sure that the requested amounts and information in the Detailed Budget Table correspond to the amounts and information indicated in the application

The Detailed Budget Table includes both – total project costs and requested grant amounts. In the application only grant amounts should be specified.

# Social Innovation Initiative

## Thank you

Ukraine@esf.lt

<https://www.esf.lt/en>

[https://commission.europa.eu/index\\_en](https://commission.europa.eu/index_en)



Funded by  
the European Union



# Assessment and selection process

**Miglė Aleksonytė**

European Competence Centre for Social Innovation

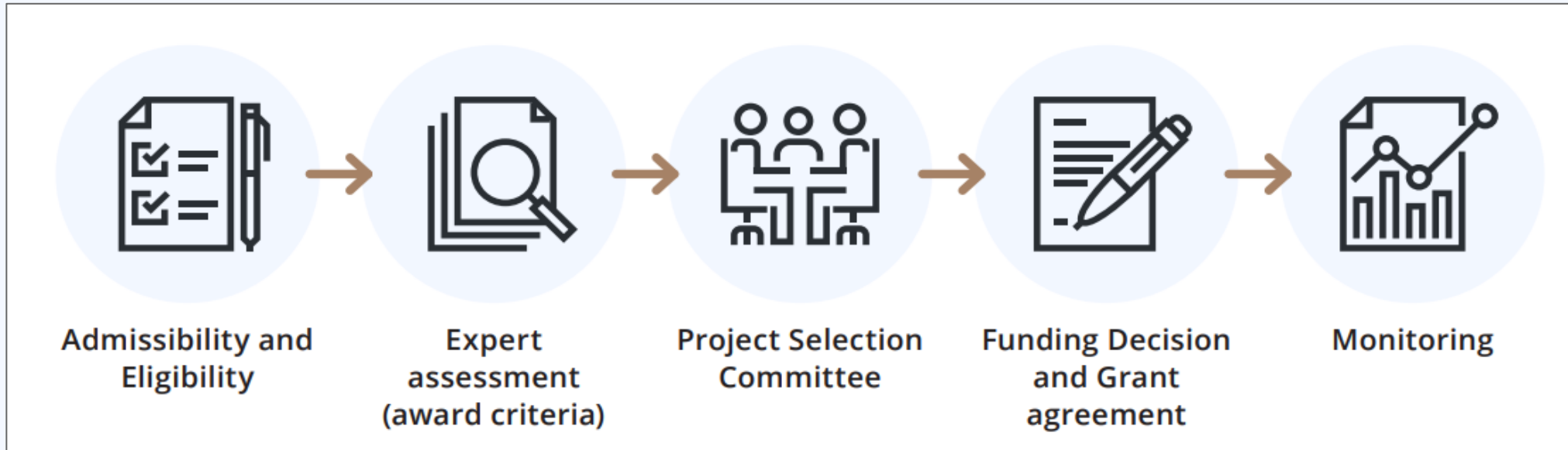
**Social  
Innovation ⊕  
Initiative**

# Admissibility and eligibility check, award criteria, assessment process and selection

**Miglė Aleksonytė**  
Head of Project management group  
European Competence Centre for Social Innovation

27 February 2024

# Assessment and selection process



**Legal entity. Operational capacity.  
Exclusion criteria  
(Section 6.1, 7.2, 7.3)**

**Financial capacity  
(Section 7.1)**

# Admissibility check

## An admissible application must be:

- submitted before 30/05/2024 at 5:00 PM CEST
- submitted electronically via eSINNI's Portal
- readable and accessible
- complete, and contain all the requested information
- must contain all mandatory annexes and supporting documents.



*Failure to comply with one of the admissibility and eligibility requirements may lead to the rejection of the application.*

# Documents to be submitted

## I. Application Form (Part A and B)

## II. Mandatory Annexes and supporting documents:

- Detailed budget table (Annex 1)
- List of previous projects (Annex 5)
- Declaration of Honour for Beneficiaries (Annex 6)
- Declaration certifying the professional competences and appropriate qualifications of the project team (Free format)
- The organisation **registration certificate** (Not applicable in case of PIC available)



*Not mandatory, but highly recommended - Consortium agreement.*

# Eligibility check

**To be considered eligible, an application shall**

- Involve only eligible applicants
- Be submitted by a consortium meeting the requirements
- Not involve legal entities subject to the EU restrictive measures (see Section 6.1)
- Not exceed the maximum project duration 18 month (see Chapter 4)
- Include co-financing of at least 20% of the project's total budget (see Section 3.1)
- Meet operational capacity criteria (see Section 7.2)
- Not propose a project that has already been funded from the EU budget or will receive such funding in the foreseeable future.



# Operational Capacity

**Only operational capacity of the Coordinator will be assessed**

The coordinator must have sufficient experience in project management/coordination:

- a) the coordinator (as a legal entity) managed **at least one** consortium project within **the past five years**; or
- b) **the lead project manager**, directly involved in the implementation of the project submitted under the Call, managed at least one consortium project within **the past five years**.

Additionally, the lead project manager is expected to have a very good command of English (C1 level or higher). The lead project manager can be:

- i. currently employed, or
- ii. planned to be employed by the coordinator (no later than the date of signature of the Grant Agreement).



# Operational Capacity

## Requirements for the Consortia projects

Only those consortia projects that:

- 1) had involved partners (an applicant/ coordinator and co-applicant) from **no less than two different countries** and
- 2) had lasted **at least 12 months** or had the **total budget of more than EUR 200 000** will be taken into consideration for the assessment of operational capacity of the coordinator.



*Project coordination/management activities are core activities and may not be subcontracted.*

# Operational Capacity

**The operational capacity of the Coordinator to manage the project shall be confirmed by the submission of the following supporting documents:**

- A declaration of the Coordinator certifying the professional competences and appropriate qualifications of the project team to carry out the required tasks.
- General profiles (qualifications and experiences) of the staff responsible for managing a project.
- A list of projects managed by the Coordinator within the past 5 years. The information presented should include the subject matter of these projects, their main activities, involvement of partners, and the role of the Coordinator.



*If the Coordinator is considered not to have the required operational capacity, the entire application will be rejected.*

# Financial capacity

**The financial capacity of applicant shall be assessed prior to the signature of the Grant Agreement, unless during the assessment of applications a different decision might be taken.**

Under this Call, only the financial capacity of the coordinator will be assessed.

An applicant shall have stable, sufficient, and solid financial recourses (a strong financial capacity) to maintain project activities and to finance it as necessary.



*The verification of financial capacity shall NOT apply to public bodies.*

# Exclusion criteria

**Exclusion from participating in the Call, if any of the criteria is met:**

- **Bankruptcy**, winding up, affairs administered by the courts, arrangement with creditors, suspended business activities or other similar procedures
- In breach of **social security** or **tax obligations**
- **Guilty** of grave professional misconduct
- Committed **fraud, corruption, money laundering, terrorism- related crimes**
- Has shown **significant deficiencies** in complying with the main **obligations** under an **EU procurement contract, Grant Agreement, prize, expert contract**
- Guilty of irregularities
- Other

# Award criteria

The applications that are declared eligible and admissible will be subject to an assessment against the award criteria

RELEVANCE. Max 40 points, threshold 25 points

QUALITY (project design, implementation and team). Max 40 points, threshold 20

IMPACT. Max 20 points, threshold 10 points



*Maximum of total award criteria points: 100 points. Overall threshold: 60 points.  
Application will be rejected if it scores below the overall minimum threshold (60 points) or if it does not pass the minimum score threshold set for a certain award criterion.*

# Relevance

Max 40, threshold 25 points:



the extent to which the project contributes to the objectives and outputs of the Call



the extent to which the project demonstrates that it contributes to / complements the results of past activities in the field of social innovation

# Quality - project design, implementation and team

Max 40, threshold 20 points:

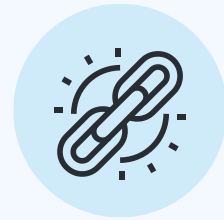
Project design and implementation  
(max 20, threshold 10 points):



clarity and consistency of the project



a balanced distribution of tasks, responsibilities, resources and management tools



logical links between the identified problems, needs and proposed solutions



a clear and justified rationale for the composition of the consortium.



methodology for implementing the project (organization of work, monitoring, timetable, risks & risk management);

The cost-effectiveness of the project  
(max 20, threshold 10 points):



feasibility of the project within the proposed time frame and budget;



cost effectiveness (sufficient/ appropriate budget for proper implementation; best value for money)



# Impact

**Max 20, threshold 10 points:**



the extent to which the application includes a sound and detailed impact evaluation methodology



the effectiveness of dissemination to maximise the uptake of the project results at local/ regional/ national/ European levels.



the extent to which the planned intervention demonstrates a long-term vision


# Helpful tips

- Search for partner
- Check out the FAQ and Support to applicants
- Turn your questions to [Ukraine@esf.it](mailto:Ukraine@esf.it) or [IThelp@esf.it](mailto:IThelp@esf.it)
- Start preparing your application early enough
- Take advantage of the Annex 4 „The list of required documents“
- Submit the application by **30/05/2024 5:00 PM CEST**
- Follow information on the Call website [www.esf.it/en](http://www.esf.it/en)



# Next steps

## Check Support to applicants

[Innovative Approaches to Mitigate the Societal Consequences of Russia's War of Aggression against Ukraine within EU Countries](#) 

- | Call documents
- | Sources of inspiration
- | Support to applicants

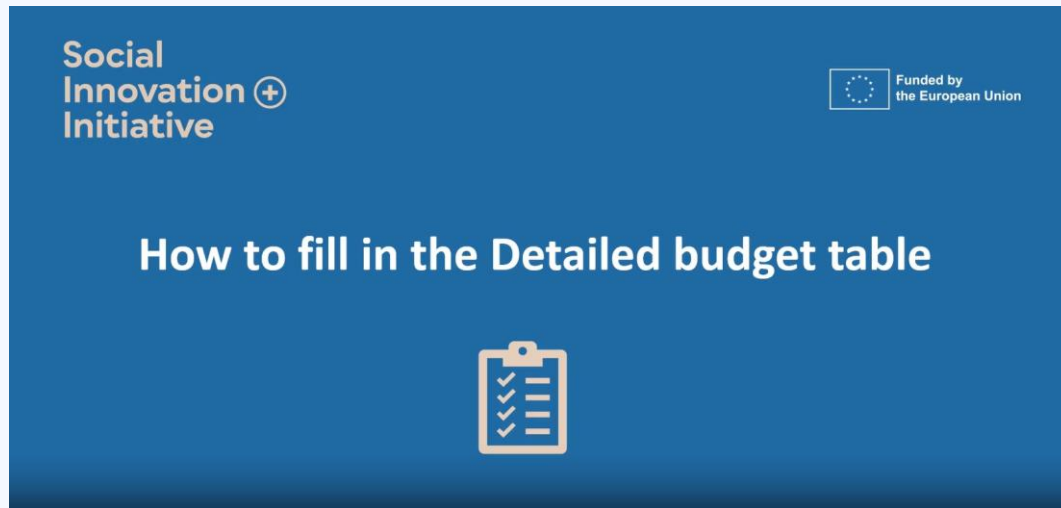
## Innovative Approaches to Mitigate the Societal Consequences of Russia's War of Aggression against Ukraine within EU Countries

Social  
Innovation   
Initiative



# Next steps

## Video material



# Social Innovation Initiative

## Thank you



Funded by  
the European Union



# Announcement of the upcoming matchmaking event

**Beata Mažul**

European Competence Centre for Social Innovation

**Social  
Innovation ⊕  
Initiative**

# Virtual matchmaking event 5-8 March, 2024

**Beata Mažul**

Project coordinator | Transnational Calls Team  
European Competence Centre for Social Innovation

27 February 2024



Funded by  
the European Union



# Topics to be covered:

- Key information:

**When** and **where**?

**Who** can participate?

**Why** to participate?

**How** does it work?

- Useful tips



# Virtual matchmaking event

## When?

5-8 March, 2024

**Registration open  
27 February – 8 March**

## Where?



[Home | Matchmaking for the Call on Societal Consequences of War of Aggression against Ukraine \(b2match.com\)](#)

## Who can participate?

- Entities which are eligible participants under the Call, **and which are looking for partners to implement a joint transnational project.**



*No more than two representatives of an organization will be approved!*

# Virtual matchmaking: why to participate?

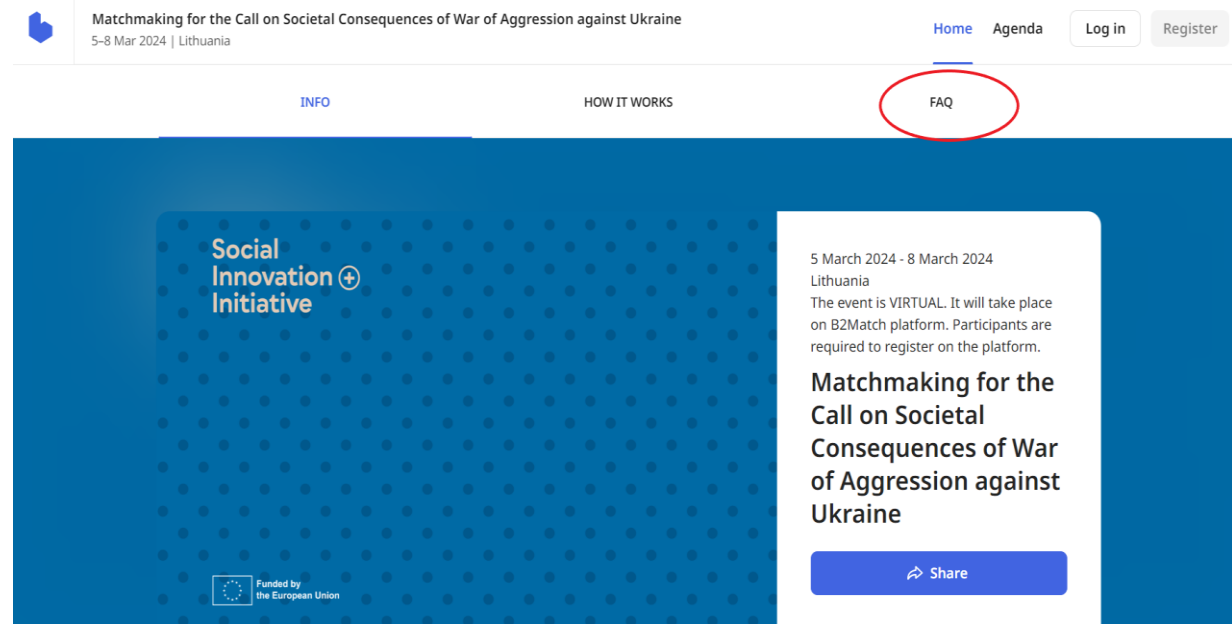
- Diverse stakeholders from public, private and civil society sectors
- Participants from EU Member States: a possibility to find a partner and form a transitional consortium
- Being visible to other like-minded actors of social innovation ecosystem
- A tool with AI algorithms which simplify arrangement of meetings and facilitate the search of relevant partners



# Virtual matchmaking: how does it work?

- Register for the event
- Create your profile to showcase who you are and for what are you looking for
- Browse profiles of attendees and identify suitable partners' profiles
- Send & receive meeting requests and messages to establish contact
- Participate in arranged meetings

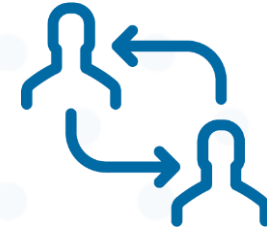
How to complete each stage?



The screenshot shows the website for the event "Matchmaking for the Call on Societal Consequences of War of Aggression against Ukraine". The navigation menu includes "Home", "Agenda", "Log in", and "Register". The "FAQ" link is circled in red. The main content area features the "Social Innovation Initiative" logo and the event details: "5 March 2024 - 8 March 2024, Lithuania". The text states: "The event is VIRTUAL. It will take place on B2Match platform. Participants are required to register on the platform." Below this is the event title and a "Share" button. The footer includes the "Funded by the European Union" logo.

# Virtual matchmaking: how does it work?

- 4 days of matchmaking sessions from 8:00 to 19:30 CET
- Schedule 30-minute online meetings with up to 8 potential partners.
- Before attending meetings, specify at which time you are available to meet with other participants. *You can remove specific time slots or entire meeting blocks if you wish to indicate you are unavailable during that time.*
- When accepting a meeting request, you will see all common available time-slots and can decide on your preferred date and time of the meeting.
- As a participant, you build your own agenda based on selected sessions and accepted meeting requests. *The 'My Schedule' tab shows all sessions and meetings in which you have participated or are about to participate.*



# Virtual matchmaking: useful tips

- Fill in „Marketplace“. *It will help to showcase what you have to offer or what you are looking for.*
- Indicate your availability for meetings. *You will only be able to send and receive meeting requests in those time slots.*
- Use the matchmaking filter and selection criteria available to find a relevant partner.
- Use the messaging feature to send plain text messages or share files relevant to the participants you engage with.
- Matchmaking is about establishing beneficial connections: be active in sending and approving meeting requests.

Social  
Innovation ⊕  
Initiative

Start with a match  
and finish with meaningful partnerships  
for joint transnational projects!



Matchmaking for the Call on Societal Consequences of War of Aggression against Ukraine  
5-8 Mar 2024 | Lithuania



# Social Innovation Initiative

## Thank you

Ukraine@esf.lt

<https://www.esf.lt/en>

[https://commission.europa.eu/index\\_en](https://commission.europa.eu/index_en)



Funded by  
the European Union

# Please fill in the Evaluation form

Tell us how we can work together better!

